

THANK YOU FOR GETTING A MIXER RISER

PLEASE READ THIS ASSEMBLY GUIDE

Stuff in the package: 2 x riser sides, 4 x golf tees, 8 x M3 bolts (2 mm HEX / T8)

Things you need: One hex H2 screwdriver (or torx 8).

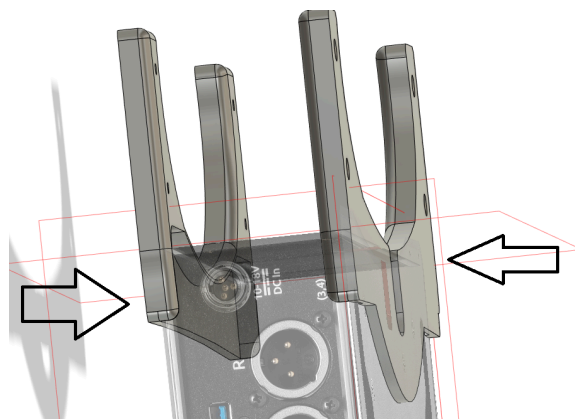
[Boring video of me assembling a riser set](#)

Step 1

The riser needs to be assembled directly onto the mixer, so you will have to pull out the mixer from the Stingray Small Bag.

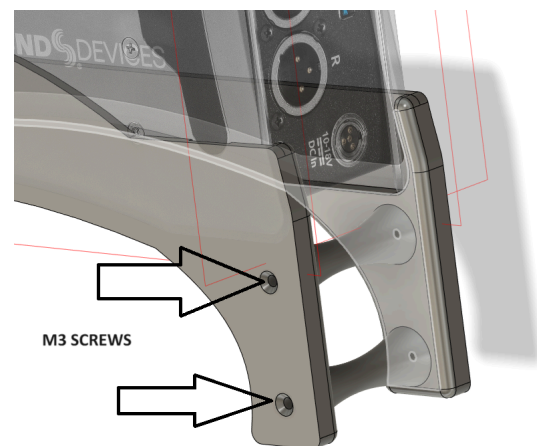
Step 2

Turn the mixer upside down and make a mixer-sandwich with the riser sides as pictured. The part with the notch goes on the belly-facing side, allowing access to the little red battery release tab.



Step 3

Now place the "golf tees" in between and secure them with the eight included M3x12 screws. No need to over tighten!



Step 4

The riser should now be firmly in place, and you are ready to go. I strongly suggest securing the riser to the rigid backside frame of the Stingray bag using a zip tie or velcro strap. This way the mixer won't move about in the back-to-front axis, and your rig will be locked in place at the correct height.

If your Stingray bag is brand new, you will probably find it sits a tad too high, but don't worry, it will settle after being carried for a couple of times

I hope you will be satisfied with this purchase - otherwise, please let me know. I love to see pictures of your setups, feel free to tag me on instagram @iddqd_audio or Facebook. The sale of these very niche items rely entirely on social media, so a mention or share really makes a difference. Thanks again

Simon Jørgensen

simon@iddqd.dk

Tel: +45 31 260 900